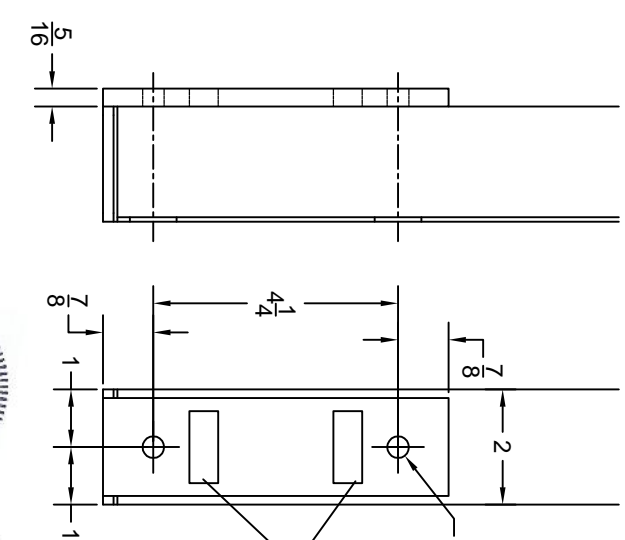
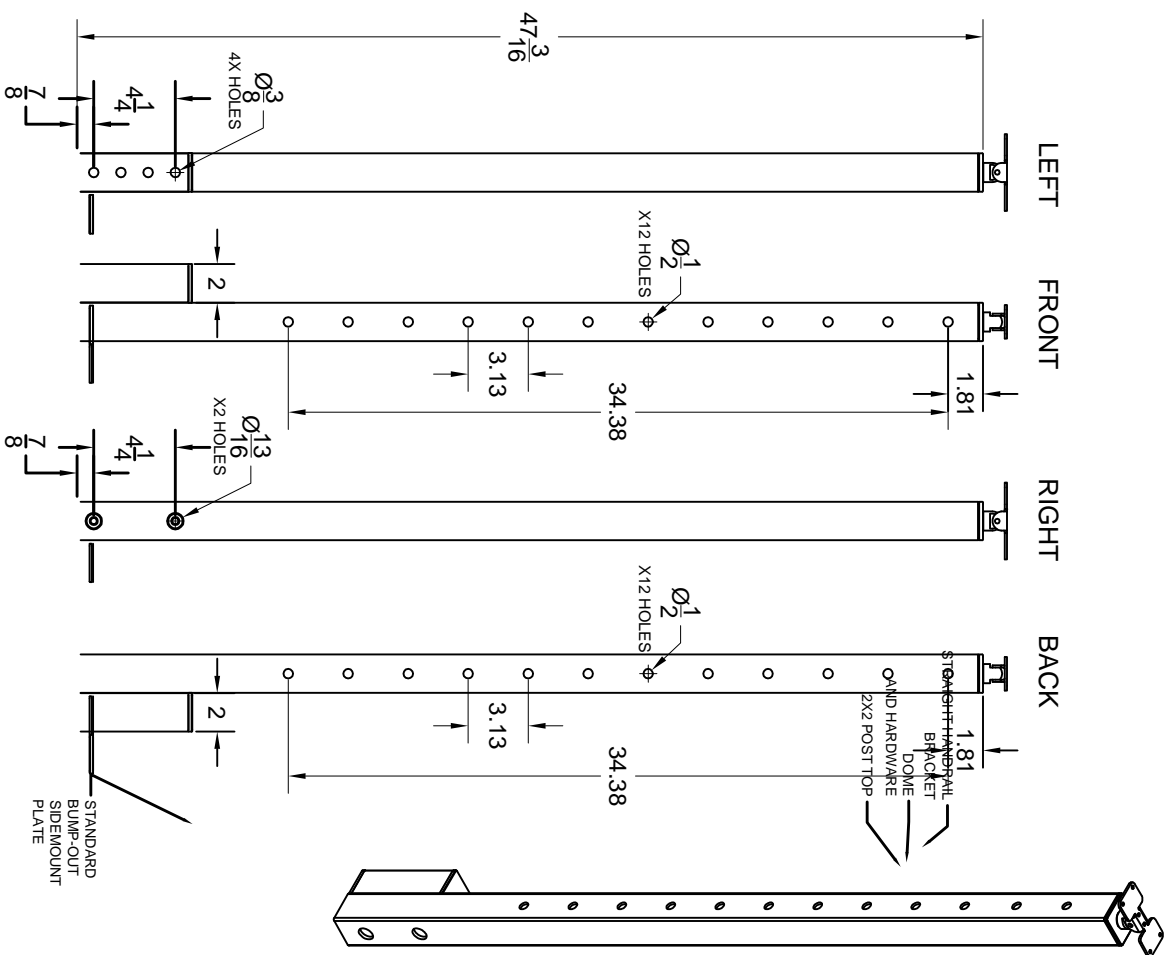
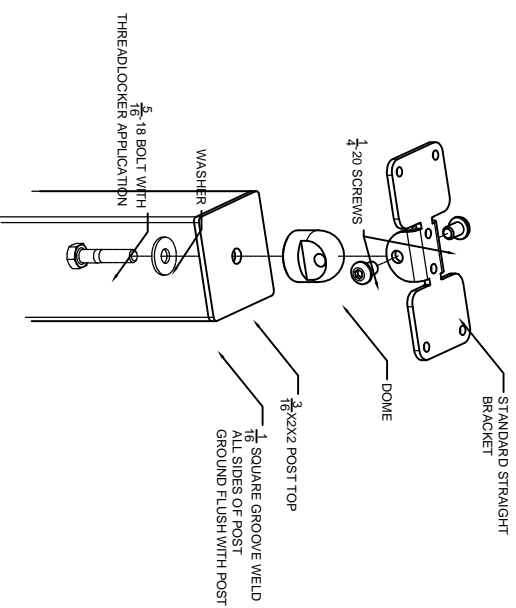


STANDARD BUMP-OUT SIDEMOUNT PLATE DETAIL  
NTS



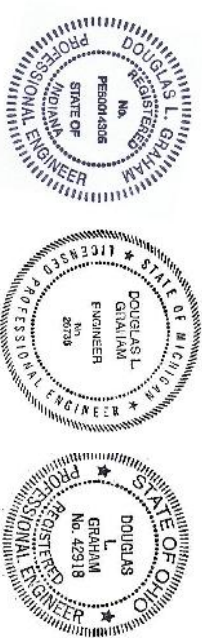
3/16 FILLET WELD  
ALL SIDES OF  
SLOTS

STANDARD 42" BUMP-OUT SIDEMOUNT POST DETAIL  
NTS

POST TYPE	SS 2X2X1/4GA	SECTION MODULUS 0.369
POST HEIGHT	36" 39" 42"	TUBE BENDING M=13200"#
MAX HORIZ TOP LOAD	350# 325# 300#	f <sub>s</sub> = 35800 > 80,000
TOP LOAD @ FAILURE	800# 750# 700#	

NOTE: DESIGN LOADS ARE LIMITED BY FLOOR BASE MATERIALS AND FASTENER CONNECTION IN FLOOR MATERIALS. IT IS THE RESPONSIBILITY OF THE INSTALLER TO VERIFY THE CONNECTIONS WITH THE LOCAL DESIGN PROFESSIONAL.

TITLE		STAINLESS STEEL BUMP-OUT SIDEMOUNT POST LOAD ENGINEERING TEST		REV
SIZE	SCALE	DWG NO		
B	NTS			
DRAWN	EMK			



*Douglas L. Graham*

08/24/17

THIS PRODUCT PART HAS BEEN TESTED BY THE P.E. OF GES  
THE PART EXCEEDS INTERNATIONAL BUILDING CODE 1607  
CONCENTRATED LOAD REQUIREMENTS OF 200 POUNDS

**GRAHAM ENGINEERING SERVICES**  
By Graham Enterprises, Inc.  
28643 CO. RD. 50  
Napanee, Indiana, 46550 574-773-0415

STANDARD POST TOP AND DOME ASSEMBLY DETAIL  
NTS