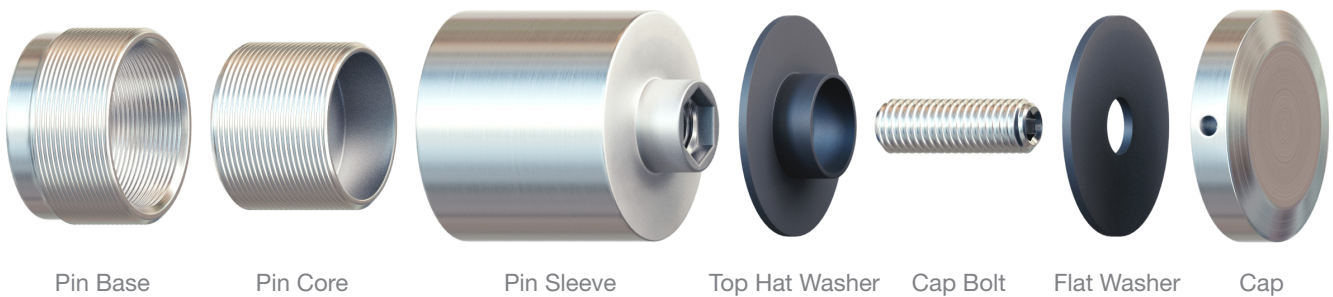




# Glass Standoff Pins Installation Guide



## Before You Begin

Inspect area where the Standoff Pins are being installed.  
Ensure that your mounting surface has sufficient backing.  
For most jobs, a minimum of 4" of backing material is recommended  
in order to securely mount your Standoff Pins.

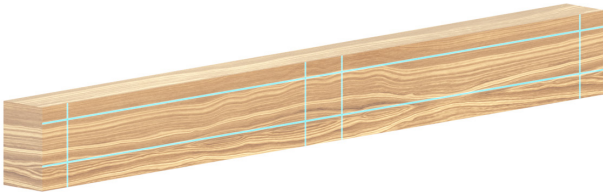
## Items You'll Need

Glass Suction Cups  
Glass Cleaner  
Towel  
Screw Wax  
Allen Wrench

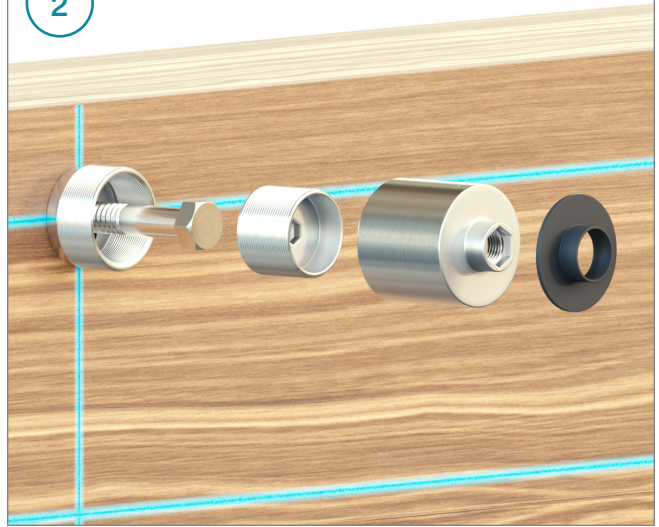
For more information or installation help, go to [www.youtube.com/Viewrail](https://www.youtube.com/Viewrail)

1

Snap chalk lines to mark pin placement based on your drawings



2



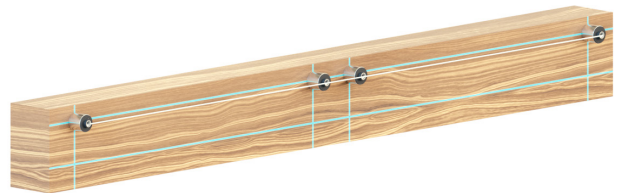
3

Use string to ensure pins are mounted level



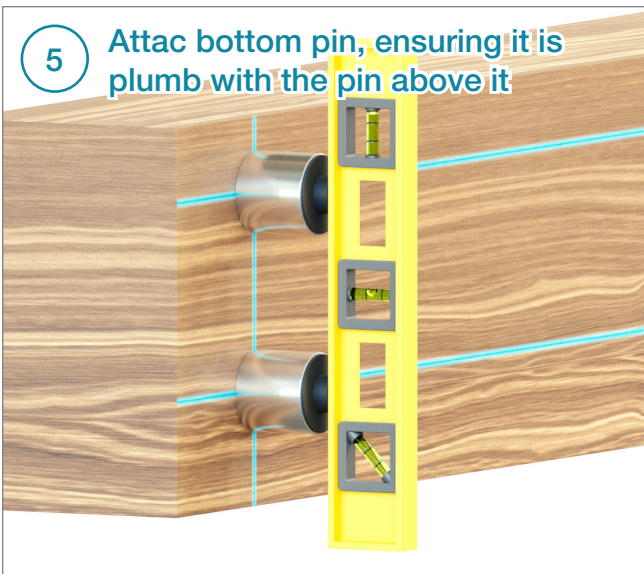
4

Attach top row of pins according to your drawings



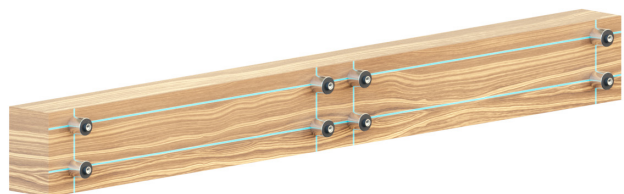
5

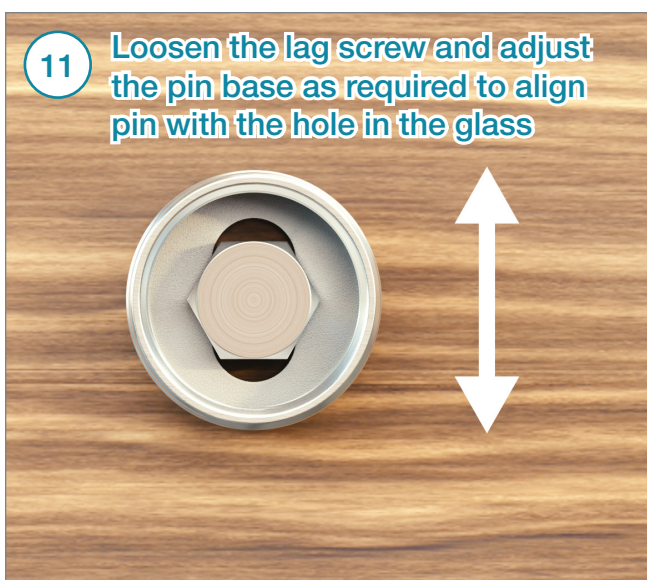
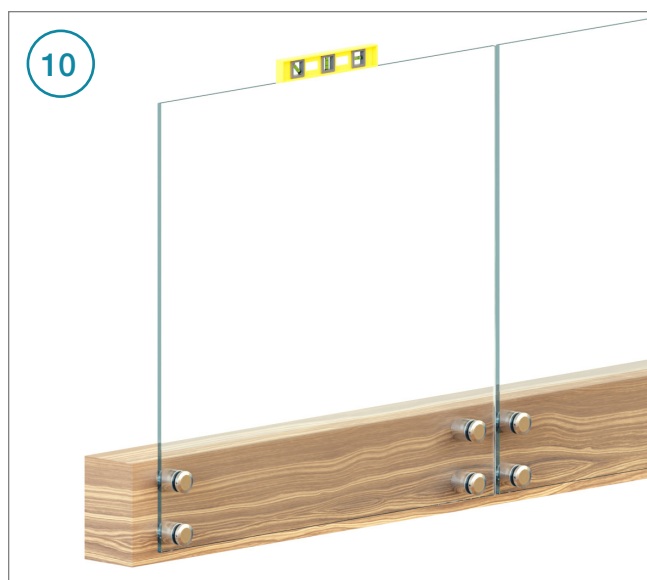
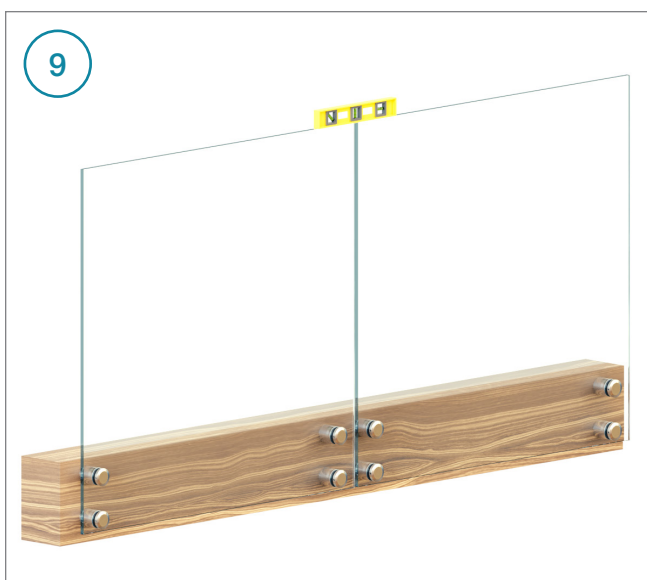
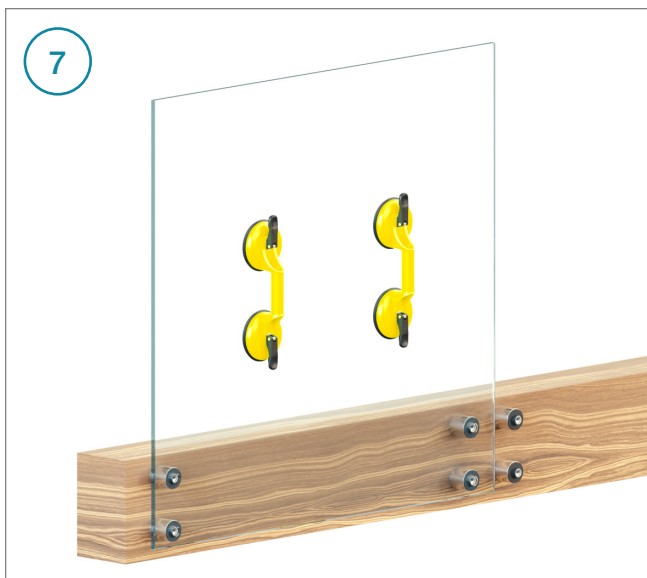
Attach bottom pin, ensuring it is plumb with the pin above it



6

Attach remaining bottom row of pins according to your drawings







### **Congratulations! Your Install is Done**

We'd love to see your work! Snap a few pics with your phone and send them to [pictures@Viewrail.com](mailto:pictures@Viewrail.com). Thanks for choosing Viewrail. Enjoy your new installation!