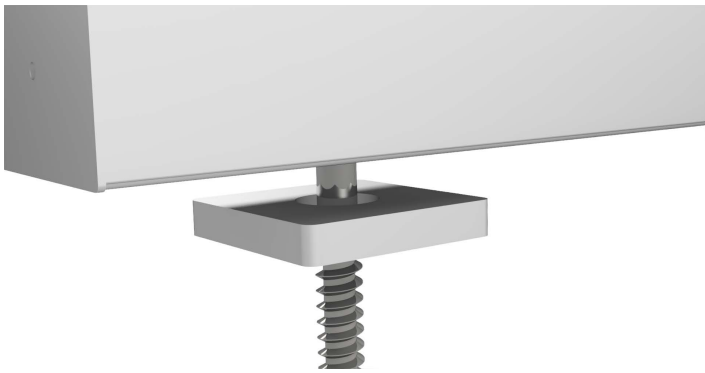
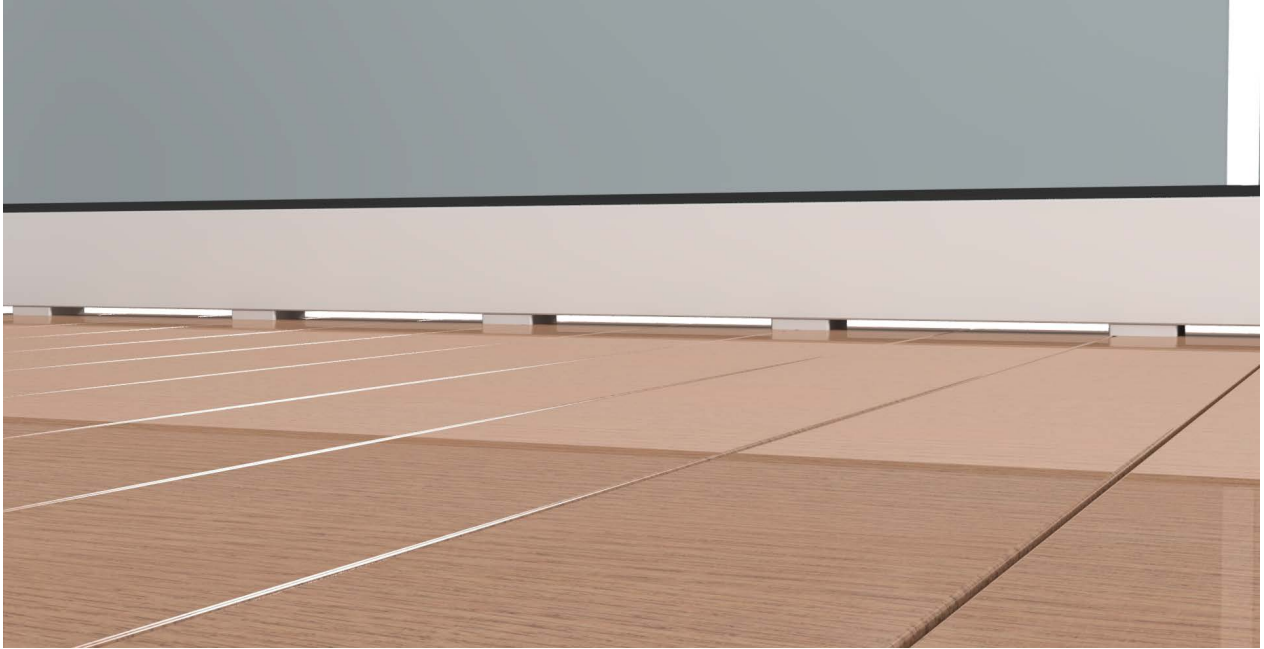


## Aluminum Drain Block



Base Rail is a continuous, solid option for supporting frameless glass railing systems. However, the body of the Base Rail can cause a build-up of water in areas where draining is a concern. Base Rail Drain Blocks can be used to alleviate this concern. Each block is constructed from a solid, anodized piece of aluminum. They are placed under the Base Rail body and the hole in the Block is lined up with a mounting hole in the Base Rail channel. The mounting hardware (wood lag or concrete wedge anchor) is then fastened down through the hole and holds the Block in place. This raises the entire system just over  $3/8$ " off the mounting surface and lets water drain underneath the Base Rail.

Dimensions:

